

## TB250 Standard UK Specification - Long Arm/Rubber Tracks - Dimensions Long Arm/Rubber Tracks

Engine	
Make	YANMAR
Model	4TNV88
Rated Output (kW)/rpm	28.4/2400
Maximum Torque (Nm)	131.8-143.4
Cylinders	4
Displacement (cc)	2185
Electrical System	12 volt 92 amp

Dimensions & Weight	
Operating Weight inclusive of bucket and fuel (kg)	4980
Overall Length (mm) for transport	5550
Width (mm)	1840
Height (mm)	2515
Ground Clearance (mm)	335
Min. Front Swing Radius (mm)	1740
Slew Radius (mm)	1435
Dozer Blade (W x H) (mm)	1840 x 430

Operating Information	
Max Digging Depth (mm)	3785
Max Dump Height (mm)	4175
Max Reach at Ground Level (mm)	5995
Max Vertical Digging Depth (mm)	2990
Max Bucket Digging Force (kN)	37.2
Max Arm Digging Force (kN)	22.9

Hydraulic System	
Set Pressure (bar)	210
Pump Type	Variable x 2 +Gear x 2
Hydraulic Flow Aux Port (l/min)	58

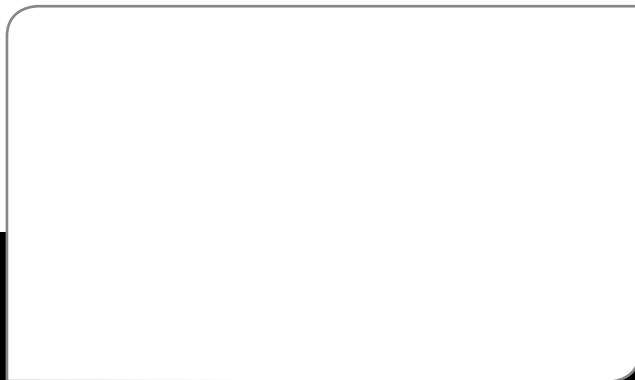
Swing System	
Boom Swing Angle (L/R)	78°/58°
Slew Speed (rpm)	9.8
Slew Motor	Piston
Slew Brake	Disc

Undercarriage	
Traction Motor	Axial Piston
Traction Drive	Planetary
Traction Brake	Disc
Track Width (mm)	400
Ground Contact Length (mm)	1985
Ground Pressure (kpa)	28.1
Travel Speed (km/h)	2.8/5.2
Maximum Gradeability	30°

Capacities	
Hydraulic System (l)	88
Fuel Tank (l)	73
Engine Lubrication (l)	7.4
Cooling System (l)	12.4

## For more information locally

call us direct, or contact:



Takeuchi Mfg (UK) Ltd, Unit E2B Kingsway Business Park,  
John Boyd Dunlop Drive, Rochdale, Lancashire OL16 4NG  
Tel: 01706 657 722 Fax: 01706 657 744

Southern Depot at 20 Colthrop Business Park  
Colthrop Lane, Thatcham, Newbury, Berks RG19 4NB  
Tel: 01635 877 196 Fax: 01635 877 195

www.takeuchi-mfg.co.uk Email: sales@takeuchi-mfg.co.uk

09/2016

Takeuchi machines come with a 2 year/2000 hours warranty as standard. Warranty exceptions to 1 year; fuel injection systems, electrical components, paint work.

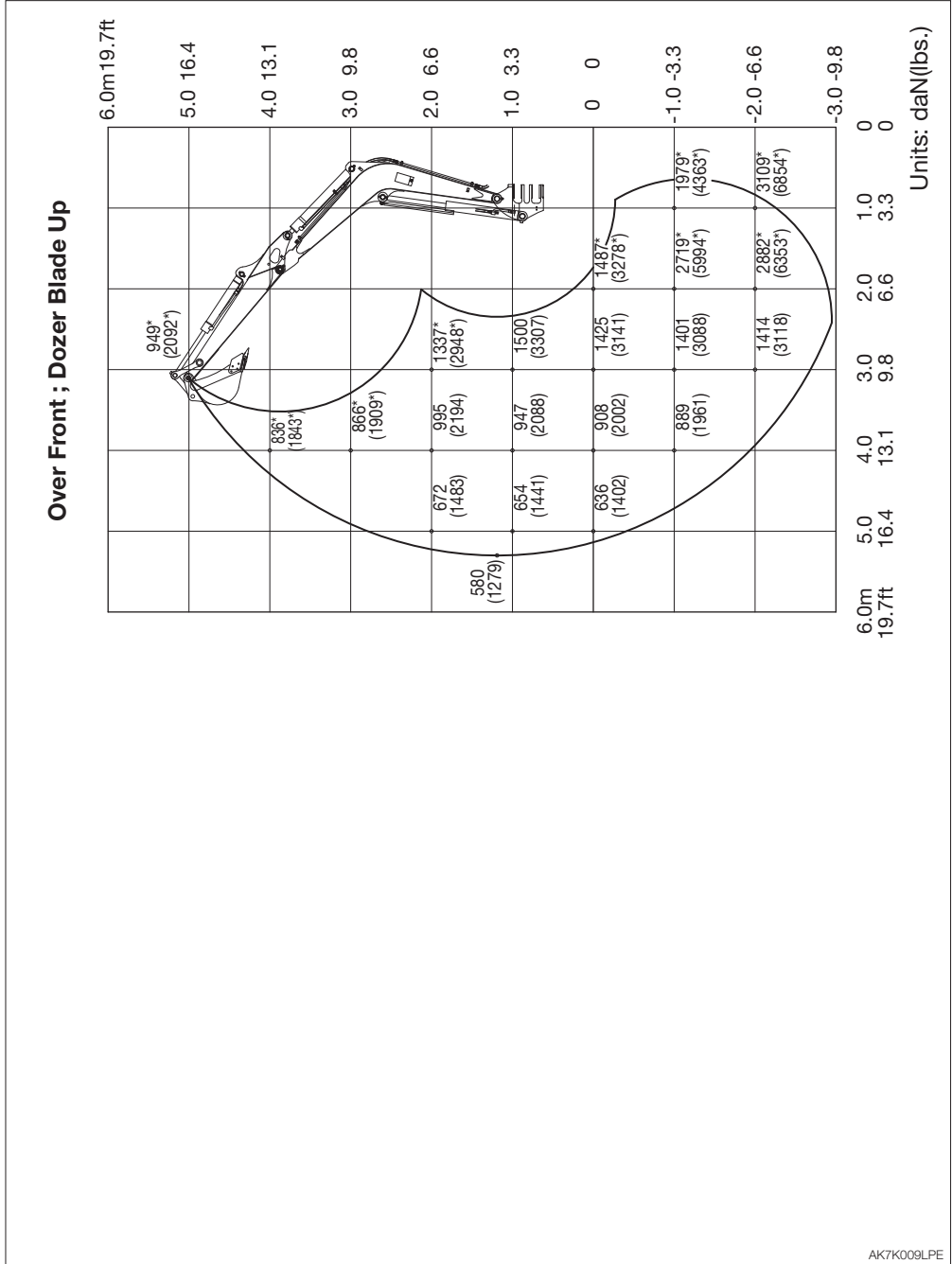
In accordance with our established policy of constant improvement, we reserve the right to amend these specifications at any time without notice. Photographs shown may feature non-standard equipment.

**TAKEUCHI**  
Japanese for Reliability



SPECIFICATIONS  
**LIFTING CAPACITIES**

<TB250> Equipped with long arm



AK7K009LPE



SPECIFICATIONS  
**LIFTING CAPACITIES**

<TB250> Equipped with long arm

