

## TB260

Standard UK Specification - Long Dipper/Rubber Tracks

Engine	
Make	Yanmar
Model	4TN84T-BPTB
Rated Output (kW)/rpm	34.3 / 2400
Maximum Torque (Nm)	160
Cylinders	4
Displacement (cc)	1995
Electrical System	12volts 90amp

Dimensions & Weight	
Operating Weight inclusive of bucket and fuel (kg)	5720
Length (Transporting) (mm)	5550
Width (mm)	2000
Height (mm)	2600
Ground Clearance (mm)	330
Min. Front Swing Radius (mm)	2420
Slew Radius (mm)	1300
Dozer Blade (W x H) (mm)	430 x 2000

Operating Information	
Max Digging Depth (mm)	3895
Max Dump Height (mm)	4220
Max Reach at Ground Level (mm)	6130
Max Vertical Digging Depth (mm)	4220
Max Bucket Digging Force (kN)	43.2
Max Arm Digging Force (kN)	27.3

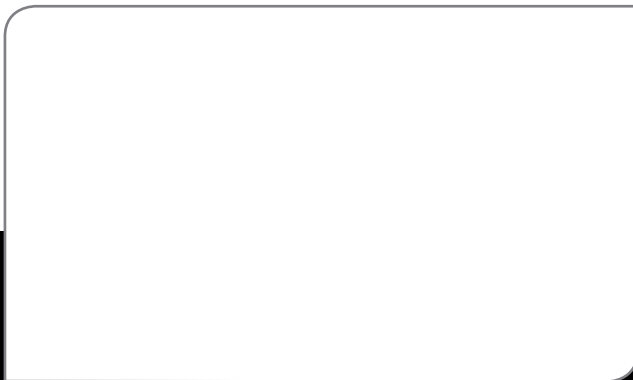
Hydraulic System	
Set Pressure (bar)	240
Pump Type Displacement	Displacement
Hydraulic Flow Aux port / Hi-flow	57/100 (l/min)

Swing System	
Boom Swing Angle (L/R)	78°/55°
Slew Speed (rpm)	9.4
Slew Motor Piston	Constant Volume Piston
Slew Brake	Wet Friction Plate

Undercarriage	
Traction Motor	Axial Piston
Traction Drive	Planetary
Traction Brake	Disc
Track Width (mm)	400
Ground Contact Length (mm)	2050
Ground Pressure (kpa)	31
Travel Speed (K/ph)	2.8-4.9
Maximum Gradeability	30°

Capacities	
Hydraulic System (l)	90
Fuel Tank (l)	81
Engine Lubrication (l)	7.4
Cooling System (l)	11

**For more information locally**  
call us direct, or contact:



**OPTIONS:** Steel Tracks, Hydraulic Breaker, Travel Alarm, Hydraulic Quick Hitch.

All dimensions unless otherwise stated are in millimetres.

09/2013

Takeuchi machines come with a 2 year/2000 hours warranty as standard. Warranty exceptions to 1 year; fuel injection systems, electrical components, paint work.

In accordance with our established policy of constant improvement, we reserve the right to amend these specifications at any time without notice. Photographs shown may feature non-standard equipment.

**Takeuchi Mfg (UK) Ltd**, Unit E2B Kingsway Business Park,  
John Boyd Dunlop Drive, Rochdale, Lancashire OL16 4NG  
Tel: 01706 657 722 Fax: 01706 657 744

**Southern Depot** at 20 Colthrop Business Park  
Colthrop Lane, Thatcham, Newbury, Berks RG19 4NB  
Tel: 01635 877 196 Fax: 01635 877 195

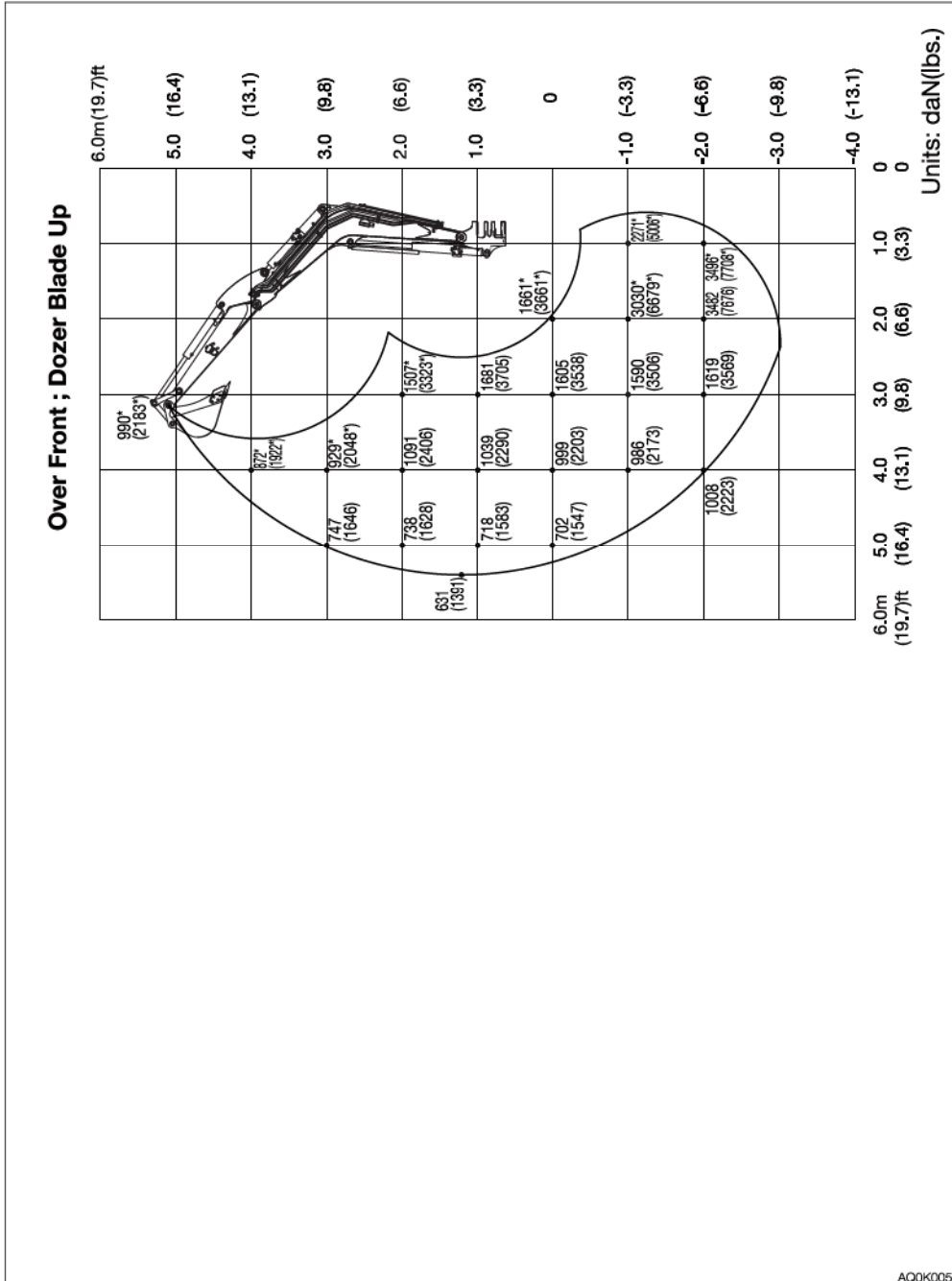
[www.takeuchi-mfg.co.uk](http://www.takeuchi-mfg.co.uk) Email: [sales@takeuchi-mfg.co.uk](mailto:sales@takeuchi-mfg.co.uk)

**TAKEUCHI**  
Japanese for reliability



SPECIFICATIONS  
**LIFTING CAPACITIES**

Long arm <Applicable machine models 12600002 or later>





**SPECIFICATIONS**  
**LIFTING CAPACITIES**

Long arm <Applicable machine models 12600002 or later>

